



Universal replacementfilter mats for cooker hoods

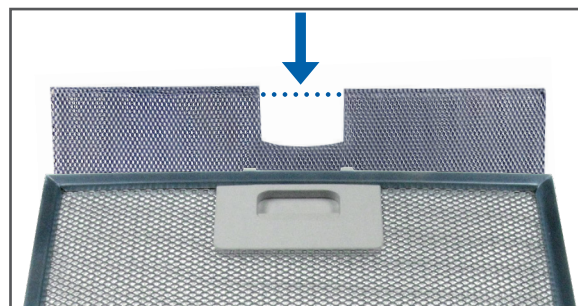
Replace easily just the inside filter mat for your used or defected filter

Your step by step guide:

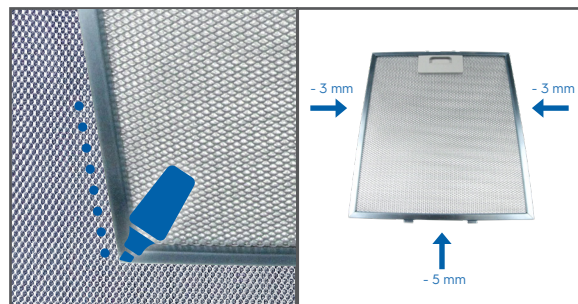
Requirements:

Scissors, Permanent marker, Screwdriver, Stapler, Safety glasses, Working gloves.

- 1 Adjust the filter and bring forward to the dashed line (Top edge of filter).



- 2 Mark the Filter size on the new expanded metal layer. Filter size = Frame size minus 3 mm for the longitudinally side and minus 5 mm for the opposite handle side.



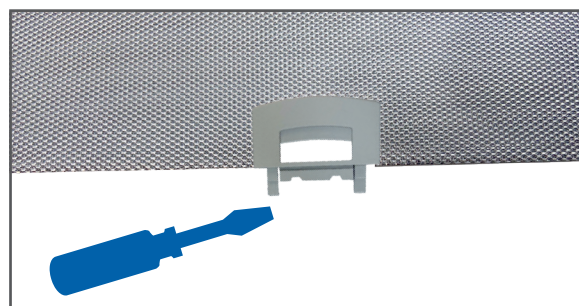
Universal replacementfilter mats for cooker hoods

Replace easily just the inside filter mat for your used or defected filter



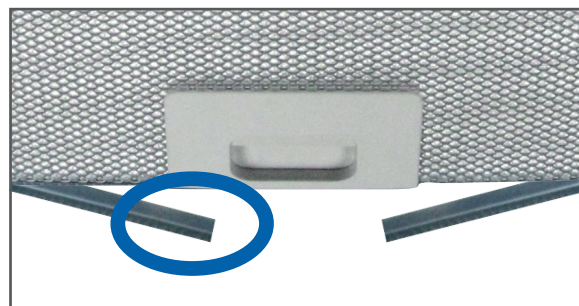
3

Unscrew the handle screws and put them aside.



4

Spread the frame carefully (not more than the width of the handle), to avoid breaking the edges. Pull out the old filter mat carefully and place the handle aside.



5

Place the cutted new filter mat carefully into the frame. Insert one of the included handle (for the appropriate frame 8mm or 9mm) into the cutted area. Close the frame carefully and screw the screws tight.

