

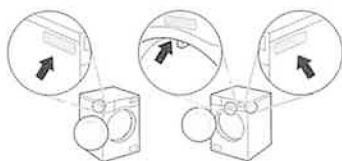
Stacking Kit Installation Manual

WARNING

- For safety reasons, installation procedure should be performed by two or more qualified service personnel.
- The weight of the appliance and the height of the installation makes the installation procedure too risky for one person.
- Incorrect installation can cause serious accidents.
- Do not operate if the appliance is not properly stacked.

NOTE

- Stacking on the LG SIGNATURE washing machine is **unavailable**.
- The stacking kit should be aligned depending on the depth of the washing machine. (When you open the door or look at the side of the washing machine, you can find the dimension information of your washing machine at the label.)

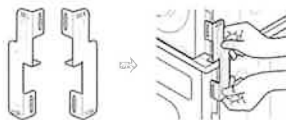


How to align LG stacking kit to the appliance	
Type A	Type B
550 mm ≤ the depth*1 ≤ 599 mm	600 mm ≤ the depth*1 ≤ 650 mm

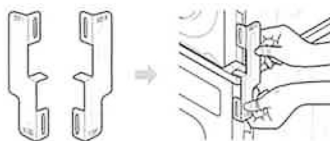
- For **Type A**, it must be assembled with 550R or 550L on upper part.
- For **Type B**, it must be assembled with 600R or 600L on upper part.

- Align the LG stacking kit holes and the rear cover holes in a line.

- In case of that the depth of the washing machine is 550 mm or more and 599 mm or less



- In case of that the depth of the washing machine is 600 mm or more and 650 mm or less



- Fasten the 2 screws that were removed earlier from the appliance to the stacking kit.
- Use the 4 screws in the accessory box (16 mm) to assemble the washing machine rear cover and stacking kit.
- The procedure for the opposite side will be the same.

NOTE

- The screws included are self-tapping screws. They can be inserted even if there are no existing holes in the washing machine.
- If inserting screws where no holes exist, increase the torque on the screwdriver at first. Once the screw creates the hole, lower the screwdriver's torque to avoid stripping the screw while tightening it.

*1 The depth of the washing machine

- Place the appliance on the top of an LG front load washing machine.
- Remove the 2 screws from the bottom of the rear cover on each side.

